

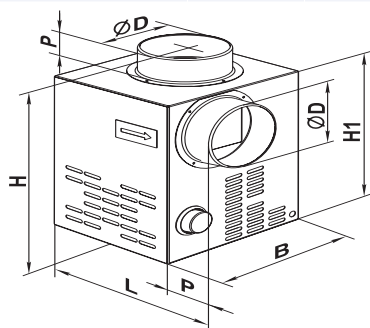
Chimney fans Eco KAM Series

- Chimney fans for hot air distribution allow creating fully-featured air heating system based on a fireplace. Such system is the perfect solution for heating of seasonal houses that serve as a second residence during winter time and provides fast and efficient hot air distribution from chimney to other premises. Used for air distribution with the air temperature range 0°C to +150°C.
- The fan casing is made of galvanized steel and equipped with heat- and sound insulation. The casing is perforated for the internal air circulation and motor cooling. The temperature regulator is used for setting the temperature level for the fan switching on and off. Fan startup is effected within the range of 0 °C to +90°C depending on the air temperature generated inside the fireplace heat-exchanger.
- The fans are supplied with single-phase motors for operation in 230/50Hz power supply network. Insulation Class F. The motors have built-in overheating protection with automatic restart. The motor is placed off-airflow and is equipped with forward-curved impeller blades as well as ball bearings for long service life.
- Mounting
- The fireplace fans are designed for connection with round air ducts. The fans can be mounted in any position with respect to the airflow direction indicated with a pointer on the casing. Access for the fan maintenance shall be reserved. Warm air feed ducts shall be laid between the fan and each of the heated rooms. Concealed air ducts system with forced warm air circulation allows saving useful space in the house and fits to the house design.

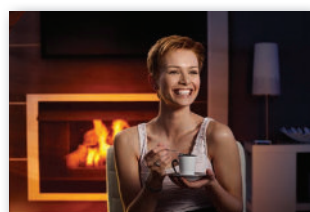
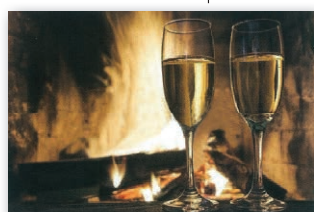


Technical Characteristics

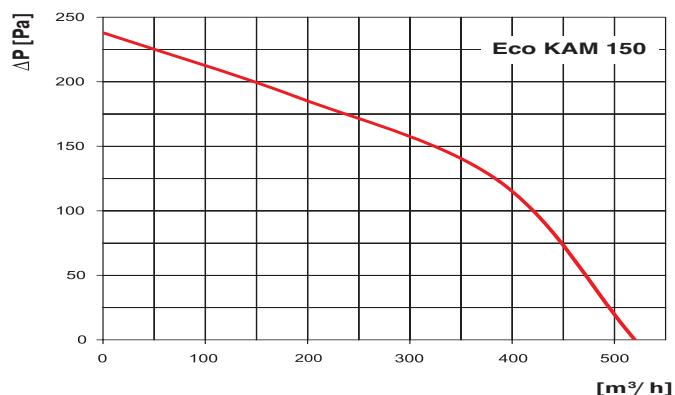
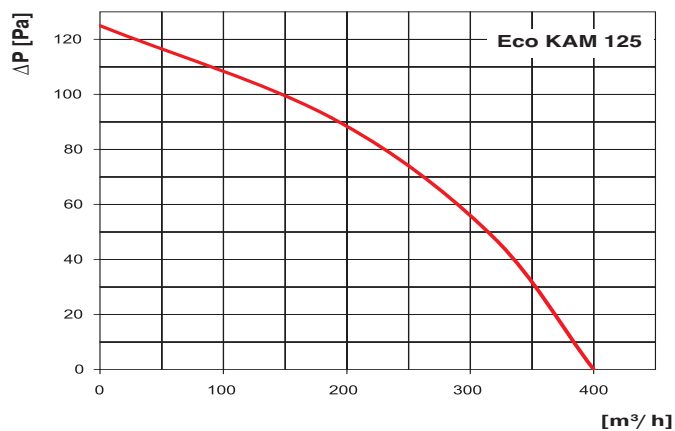
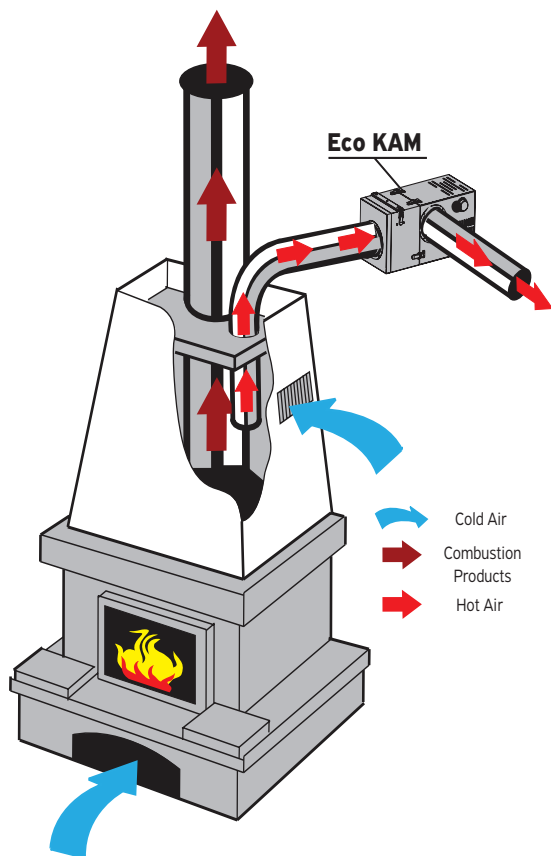
Type	Air Flow	Operation Temperature	Voltage	Power	Amperage	RPM	Noise Level	Price
	m ³ /h	°C	V	W	A		dB(A)	
Eco KAM 125	400	150	230	88	0,40	1295	39	395,00 €
Eco KAM 150	520	150	230	88	0,40	1295	39	395,00 €



Type	Dimensions (mm)						Weight
	ØD	B	H	H1	L	P	(kg)
Eco KAM 125	125	285	350	300	290	40	4,5
Eco KAM 150	150	285	350	300	290	40	5,7



Performance Curves

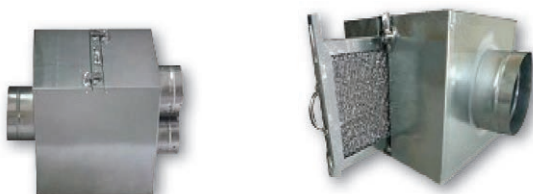


Mixing chamber KAM-H-T



- Metal mixing chamber for warm air supply.
- Warm air (**max 200°C**) distribution from the fan to other premises through the mounted air ducts.
- Compatible with **Eco KAM 150 & Eco KAM 125** chimney fans.

Mixing chamber KAMD



- Metal mixing chamber for warm air supply.
- Possibility for mounting air filter.