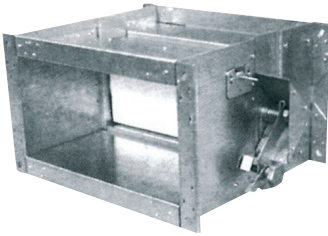


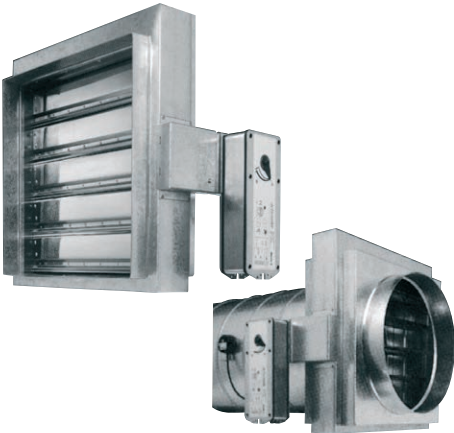
Fire Damper

Butterfly Valve Type



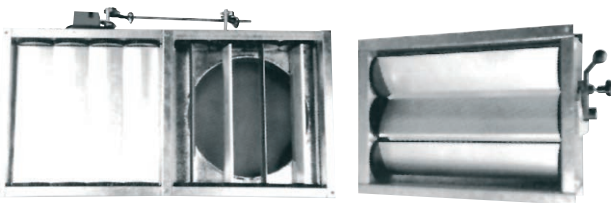
- Made of **1,5 mm** thick galvanized steel sheet and supplied with a **72°C** melting point fusible fitting, two inspection doors and connection flange on both sides.
- Available lengths **L= 375 or 500 mm**.
- 90 min. fire resistance (**K-90**).
- Certified to the highest specifications.

Curtain Type



- Available in various dimensions.
- Up to 2 hours fire resistance.
- **230V or 24V** electromagnetic operation option.
- Certified to the highest specifications.

Multi-Blade Vent



- Rectangular adjustable damper, specially for air duct flow regulation.
- Made of galvanized steel sheet.
- Plastic gears on both sides for blade movement.
- Electrical or manual operation with a special handle.
- On/Off or step-less regulation electric motors available for all dampers.

