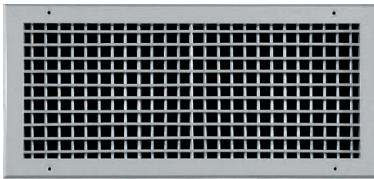


## Wall Supply Vents



Type П2П

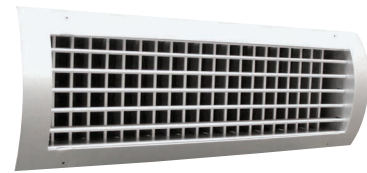
- Vents manufactured in all desired dimensions.
- Vents are painted in any selected color with electrostatic paint.
- Both rows of louvers are adjustable for airflow adjustment in any one of four directions.
- Manufactured with or without **DAMPER**.



П2П Visible



П2П + Damper



П2П - SR Cylindrical Air Duct

## Wall Extraction Vents

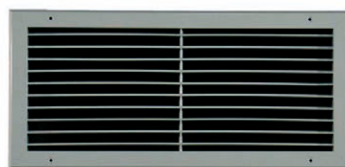


Type П1П  
(moving flaps)

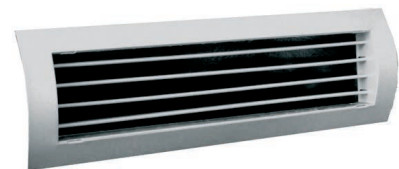
- Same construction as wall supply vents, but with one adjustable or fixed row of louvers, for room air circulation or extraction.
- Available with or without **DAMPER**.



П1П Visible



Type П1Σ (non moving flaps)



П1П - SR Cylindrical Air Duct

## Door Vents



- Door vents obtain low resistance air ventilation in between places without being visible to one another.

- Vents manufactured in all desired dimensions.
- Vents are painted in any selected color with electrostatic paint.