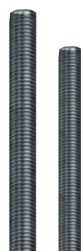


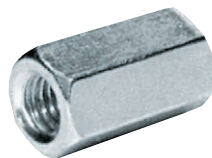
Screw Rods

Type	Diameter/ Ø mm	Price
M6 x 1m	6	€ 0,90
M6 x 2m	6	€ 1,60
M8 x 1m	8	€ 1,40
M8 x 2m	8	€ 2,80
M10 x 1m	10	€ 2,00
M10 x 2m	10	€ 3,80



▪ All dimensions available upon request.

Hexagonal Connector Nuts



Type	Packaging / piece	Price / piece
813 M6	100	€ 0,46
815 M8	100	€ 0,56
817 M10	100	€ 0,68

▪ For screw rod connection.

Metal Threaded Sleeves

▪ For mounting screw rods on roofs or walls.

Type	Packaging / piece	Price / piece
M6 UPA	100	€ 0,30
M8 UPA	100	€ 0,38
M10 UPA	100	€ 0,47

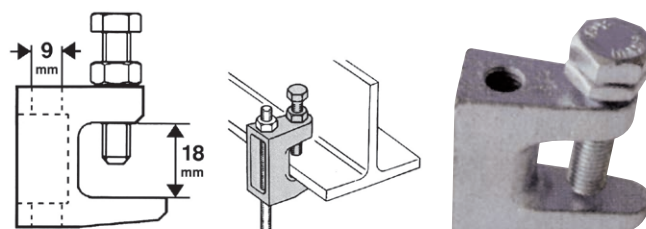


Type	Packaging / piece	Price / piece
M6 UPA ES	100	€ 0,86
M8 UPA ES	100	€ 1,06
M10 UPA ES	100	€ 1,48



Beam Clamps

- Beam Clamps are designed to suspend on beams a wide variety of systems coupled with threaded rods: tubes, pipes, ducts, etc.
- The clamps are made of malleable iron and are zinc plated. They are supplied with the hexagonal head screw and its locknut for securing the clamps on the beams.



Price

€ 3,80

Air Duct Suspension Accessories With Built In Anti-Vibration Ring



Type	Price / piece
L1	€ 2,30



Type	Price / piece
V1	€ 4,10



Type	Price / piece
Z1	€ 2,60



Type	Price / piece
U1	€ 2,50

