

## Centrifugal Jet Fans JFC F400 Series

The JFC F400 models are composed of an axial fan and two silencers.

### Fan:

- Axial fan with reinforced tubular casing, made of steel sheet. The connection box is accessible by the side from a removable door.
- Standard asynchronous squirrel-cage motor with IP-55 protection and Class H insulation, CERTIFIED 400°C/2h. Standard voltages 230/400V 50Hz) for 1 speed motors and 400V 50Hz for 2 speed motors.
- Official homologation by the European laboratory APPLUS according to EN 12101-3:2002, EN 12101-3:2002/AC:2005. Certification Nr: 0370-CPD-1325.

### Silencers:

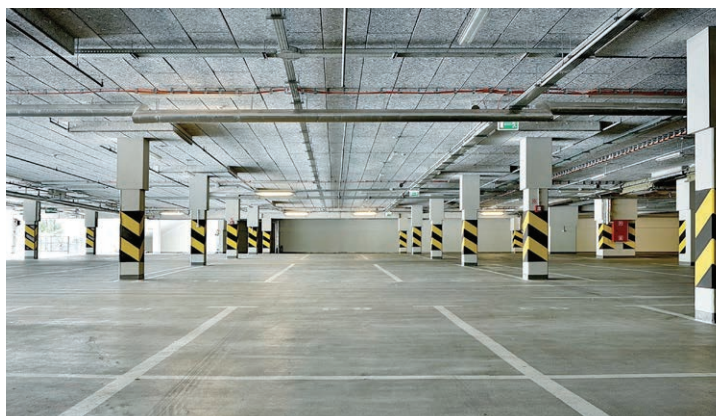
- Casing in galvanized steel. Inner duct made of perforated galvanized steel sheet.
- The silencers are filled with mineral wool with high acoustic absorption properties, preventing most of the fan noise to be propagated.
- Unidirectional JFC F400 UN is equipped with a protection guard at the inlet side and a deflector at the outlet. The deflector directs the air away from the ceiling and obstacles like beams or ducting, sweeping the whole volume of air to the closest extraction point.
- Reversible JFC F400 RE is equipped with a protection guards on both sides.

### Applications:

- Conceived for car parkings and large spaces where polluted air, or smoke from an accidental fire, needs to be removed effectively.
- An optimized design minimizes the height needed for their installation and assures a silent operation.
- Maximum working temperature: 60°C.

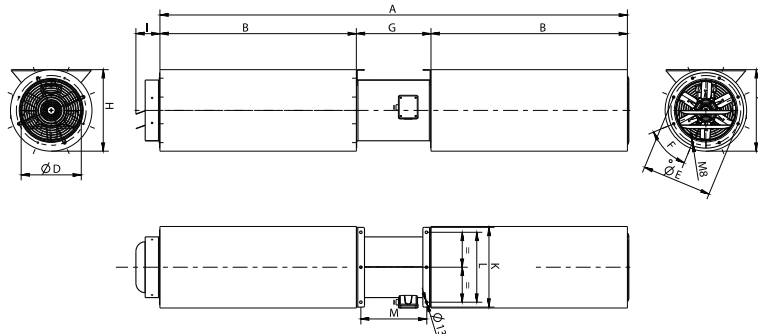


Technical Characteristics JFC F400 Series						
Type	Power (kW)	RPM	Air Flow (m <sup>3</sup> /h)	Sound db (A)	Weight (Kg)	Price
JFC 315 T2 RE	0,55	2,805	3,710	53	95	€ 3.021,00
JFC 315 T2 UN	0,55	2,805	3,910	55	91	€ 2.929,00
JFC 315/H T2 RE	1,10	2,850	4,700	56	97	€ 3.297,00
JFC 315/H T2 UN	1,10	2,850	4,950	58	93	€ 3.251,00
JFC 355 T2 RE	0,55	2,805	4,550	58	101	€ 3.375,00
JFC 355 T2 UN	0,55	2,805	4,790	60	99	€ 3.356,00
JFC 355/H T2 RE	1,10	2,850	5,990	56	103	€ 3.737,00
JFC 355/H T2 UN	1,10	2,850	6,300	58	101	€ 3.691,00
JFC 400 T2 RE	1,10	2,850	6,840	61	125	€ 3.875,00
JFC 400 T2 UN	1,10	2,850	7,200	63	121	€ 3.829,00
JFC 400/H T2 RE	1,50	2,875	9,030	63	128	€ 4.331,00
JFC 400/H T2 UN	1,50	2,875	9,500	65	128	€ 4.288,00



## Technical Characteristics JFC F400 2 Speed Series

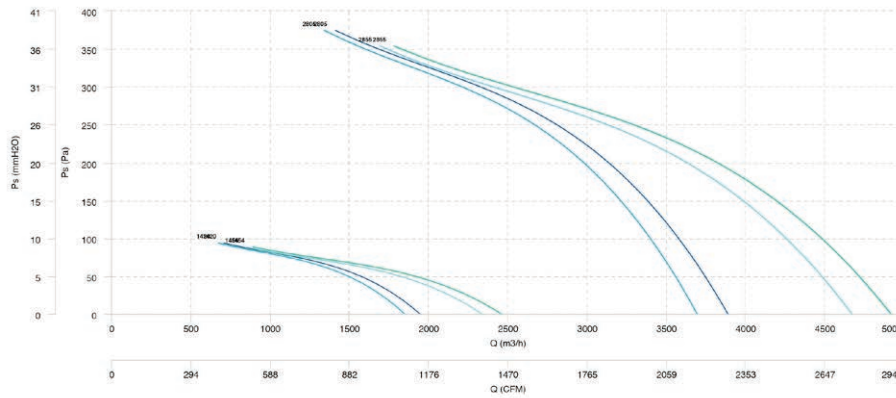
Type	Power (kW)	RPM	Air Flow (m <sup>3</sup> /h)	Sound db (A)	Weight (Kg)	Price
JFC 315 T2/T4 RE	0,55 / 0,12	2,805	3,710	53	95	€ 3.097,00
JFC 315 T2/T4 UN	0,55 / 0,12	2,805	3,910	55	91	€ 3.005,00
JFC 315/H T2/T4 RE	1,10 / 0,18	2,850	4,700	56	97	€ 3.392,00
JFC 315/H T2/T4 UN	1,10 / 0,18	2,850	4,950	58	93	€ 3.346,00
JFC 355 T2/T4 RE	0,55 / 0,12	2,805	4,550	58	101	€ 3.539,00
JFC 355 T2/T4 UN	0,55 / 0,12	2,805	4,790	60	99	€ 3.309,00
JFC 355/H T2/T4 RE	1,10 / 0,18	2,850	5,990	56	103	€ 3.901,00
JFC 355/H T2/T4 UN	1,10 / 0,18	2,850	6,300	58	101	€ 3.855,00
JFC 400 T2/T4 RE	1,10 / 0,18	2,850	6,840	61	125	€ 4.129,00
JFC 400 T2/T4 UN	1,10 / 0,18	2,850	7,200	63	121	€ 4.083,00
JFC 400/H T2/T4 RE	1,50 / 0,37	2,875	9,030	63	128	€ 4.742,00
JFC 400/H T2/T4 UN	1,50 / 0,37	2,875	9,500	65	128	€ 4.699,00



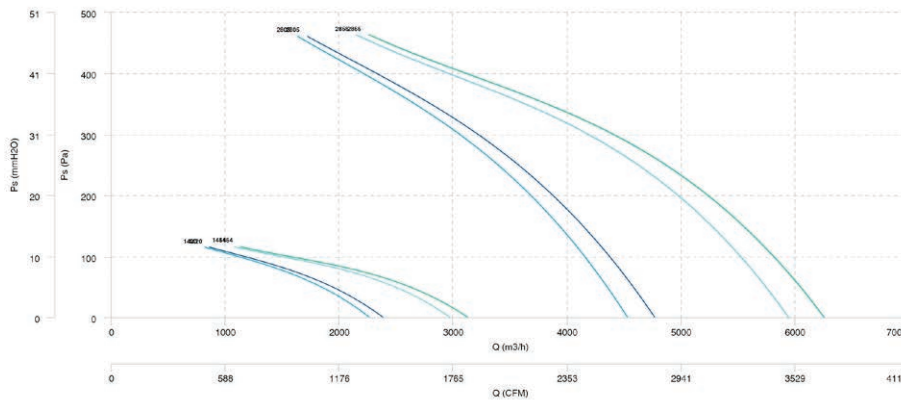
## Dimensions JFC F400 Series

Type	A	B	F	G	H	I	K	L	M	(N)	ØC	ØD	ØE
JFC 315 T2 RE F400	2380	1000	8x45°	380	415	122	406	356	347	19	415	306	355
JFC 315 T2 UN F400	2380	1000	8x45°	380	415	122	406	356	347	20	415	306	355
JFC 315 T2/T4 RE F400	2380	1000	8x45°	380	415	122	406	356	347	19/5	415	306	355
JFC 315 T2/T4 UN F400	2380	1000	8x45°	380	415	122	406	356	347	20/5	415	306	355
JFC 315/H T2 RE F400	2380	1000	8x45°	380	415	122	406	356	347	29	415	306	355
JFC 315/H T2 UN F400	2380	1000	8x45°	380	415	122	406	356	347	32	415	306	355
JFC 315/H T2/T4 RE F400	2380	1000	8x45°	380	415	122	406	356	347	29/7	415	306	355
JFC 315/H T2/T4 UN F400	2380	1000	8x45°	380	415	122	406	356	347	32/8	415	306	355
JFC 355 T2 RE F400	2380	1000	8x45°	380	455	122	461	411	346	19	455	361	395
JFC 355 T2 UN F400	2380	1000	8x45°	380	455	122	461	411	346	21	455	361	395
JFC 355 T2/T4 RE F400	2380	1000	8x45°	380	455	122	461	411	346	19/5	455	361	395
JFC 355 T2/T4 UN F400	2380	1000	8x45°	380	455	122	461	411	346	21/5	455	361	395
JFC 355/H T2 RE F400	2380	1000	8x45°	380	455	122	461	411	346	33	455	361	395
JFC 355/H T2 UN F400	2380	1000	8x45°	380	455	122	461	411	346	37	455	361	395
JFC 355/H T2/T4 RE F400	2380	1000	8x45°	380	455	122	461	411	346	34/8	455	361	395
JFC 355/H T2/T4 UN F400	2380	1000	8x45°	380	455	122	461	411	346	37/9	455	361	395
JFC 400 T2 RE F400	2425	1000	8x45°	425	500	122	506	456	382	34	500	401	450
JFC 400 T2 UN F400	2425	1000	8x45°	425	500	122	506	456	382	38	500	401	450
JFC 400 T2/T4 RE F400	2425	1000	8x45°	425	500	122	506	456	382	34/9	500	401	450
JFC 400 T2/T4 UN F400	2425	1000	8x45°	425	500	122	506	456	382	38/10	500	401	450
JFC 400/H T2 RE F400	2425	1000	8x45°	425	500	122	506	456	382	60	500	401	450
JFC 400/H T2 UN F400	2425	1000	8x45°	425	500	122	506	456	382	66	500	401	450
JFC 400/H T2/T4 RE F400	2425	1000	8x45°	425	500	122	506	456	382	60/15	500	401	450
JFC 400/H T2/T4 UN F400	2425	1000	8x45°	425	500	122	506	456	382	66/16	500	401	450

JFC 315 T2 RE F400	JFC 315 T2 UN F400	JFC 315 T2/T4 RE F400	JFC 315 T2/T4 UN F400
JFC 315/H T2 RE F400	JFC 315/H T2 UN F400	JFC 315/H T2/T4 RE F400	JFC 315/H T2/T4 UN F400



JFC 355 T2 RE F400	JFC 355 T2 UN F400	JFC 355 T2/T4 RE F400	JFC 355 T2/T4 UN F400
JFC 355/H T2 RE F400	JFC 355/H T2 UN F400	JFC 355/H T2/T4 RE F400	JFC 355/H T2/T4 UN F400



JFC 400 T2 RE F400	JFC 400 T2 UN F400	JFC 400 T2/T4 RE F400	JFC 400 T2/T4 UN F400
JFC 400/H T2 RE F400	JFC 400/H T2 UN F400	JFC 400/H T2/T4 RE F400	JFC 400/H T2/T4 UN F400

