

AT S



AT AR



AT TIC

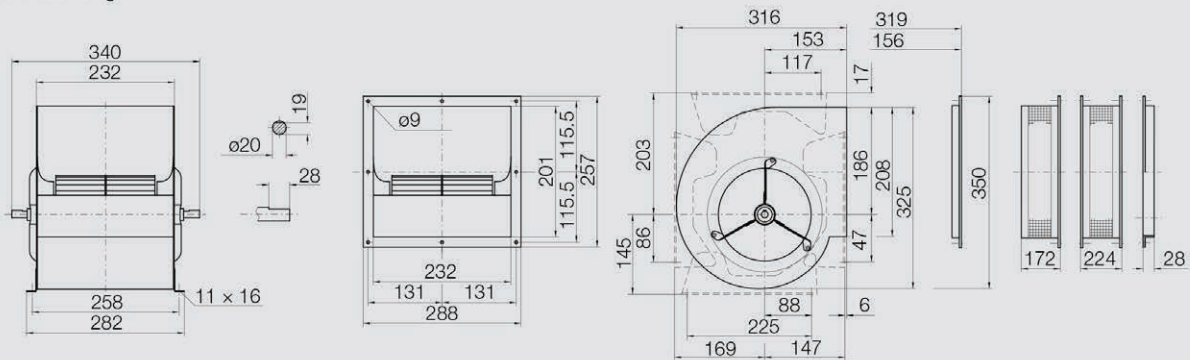
Φυγοκεντρικοί Απορροφητήρες Διπλής Αναρρόφησης Έμμεσης Κίνησης Με Φτερωτή Τύπου Σιρόκο Σειράς AT

- Φυγοκεντρικοί απορροφητήρες διπλής αναρρόφησης χωρίς ενσωματωμένο μοτέρ
- Κατασκευή κελύφους από γαλβανισμένο χαλυβδοέλασμα
- Φτερωτή τύπου σιρόκο κατασκευασμένη από χαλυβδοέλασμα, με μεγέθη από 7/7 έως και 30/28
- Κίνηση μέσω τραπεζοειδών ιμάντων και τροχαλιών
- Στιβαρή κατασκευή για υψηλές αποδόσεις
- Οι τύποι AT AR και AT TIC είναι ενσωματωμένοι σε μεταλλικό πλαίσιο στήριξης σε σχήμα L
- Παροχές έως 65.000 m³/h
- Πίεση έως 2.500 Pa
- Δυνατότητα τοποθέτησης σε Fan Section
- Στον τύπο AT S στις τιμές περιλαμβάνονται οι βάσεις στήριξης και το σετ στήριξης του μοτέρ

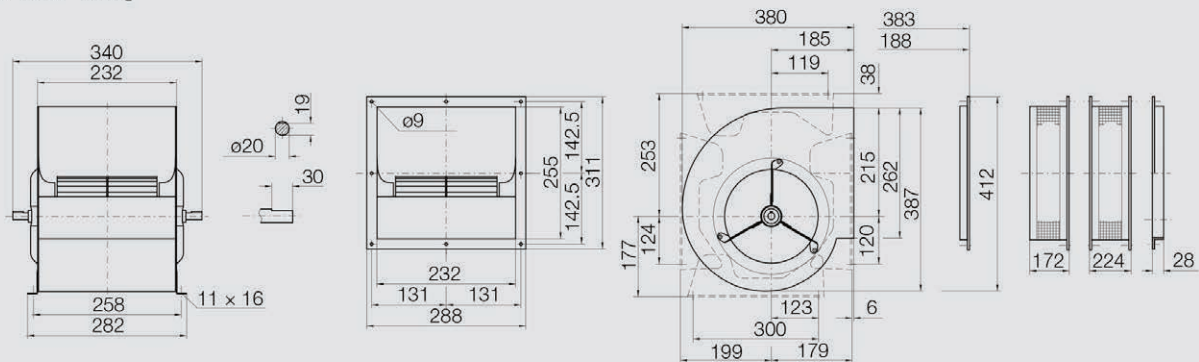
Τεχνικά χαρακτηριστικά σειράς AT

Τύπος	Ισχύς (max) (kW)	Στροφές (max) (RPM)	Θερμοκρασία Λειτουργίας °C	Βάρος (Kg)	Τιμή
AT S 7/7	3,00	2.600	-20°C / +85°C	5,0	☐
AT S 9/7	3,00	2.500	-20°C / +85°C	6,6	☐
AT S 9/9	3,00	2.100	-20°C / +85°C	7,9	☐
AT S 10/8	3,00	2.500	-20°C / +85°C	8,3	☐
AT S 10/10	4,00	2.000	-20°C / +85°C	9,3	☐
AT S 12/9	5,50	2.000	-20°C / +85°C	12,7	☐
AT S 12/12	5,50	1.500	-20°C / +85°C	15,2	☐
AT AR 12/12	11,00	1.500	-20°C / +100°C	18,4	☐
AT S 15/11	5,50	2.000	-20°C / +85°C	17,7	☐
AT AR 15/11	11,00	2.000	-20°C / +100°C	20,9	☐
AT S 15/15	5,50	1.200	-20°C / +85°C	20,6	☐
AT AR 15/15	11,00	1.200	-20°C / +100°C	24,5	☐
AT S 18/13	7,50	1.200	-20°C / +85°C	27,0	☐
AT AR 18/13	15,00	1.200	-20°C / +100°C	33,0	☐
AT S 18/18	7,50	1.100	-20°C / +85°C	32,5	☐
AT AR 18/18	15,00	1.100	-20°C / +100°C	38,2	☐
AT TIC 20/15	15,00	1.200	-20°C / +100°C	71,0	☐
AT TIC 20/20	15,00	1.300	-20°C / +100°C	78,0	☐
AT TIC 22/15	15,00	1.300	-20°C / +100°C	73,0	☐
AT TIC 22/22	15,00	1.200	-20°C / +100°C	82,5	☐
AT TIC 25/20	15,00	1.000	-20°C / +100°C	93,0	☐
AT TIC 25/25	15,00	900	-20°C / +100°C	105,0	☐
AT TIC 28/20	18,50	800	-20°C / +100°C	120	☐
AT TIC 28/28	18,50	800	-20°C / +100°C	127	☐
AT TIC 30/20	18,50	800	-20°C / +100°C	131	☐
AT TIC 30/28	18,50	800	-20°C / +100°C	138	☐

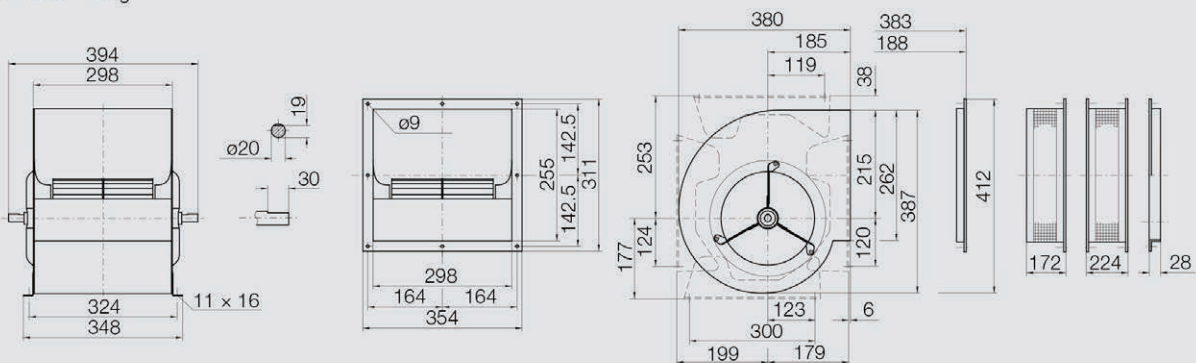
AT S-7/7 5 kg



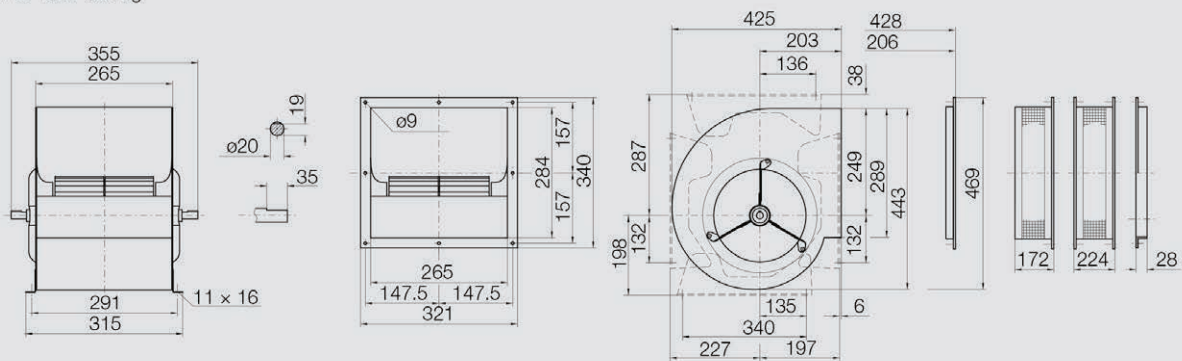
AT S-9/7 6.6 kg



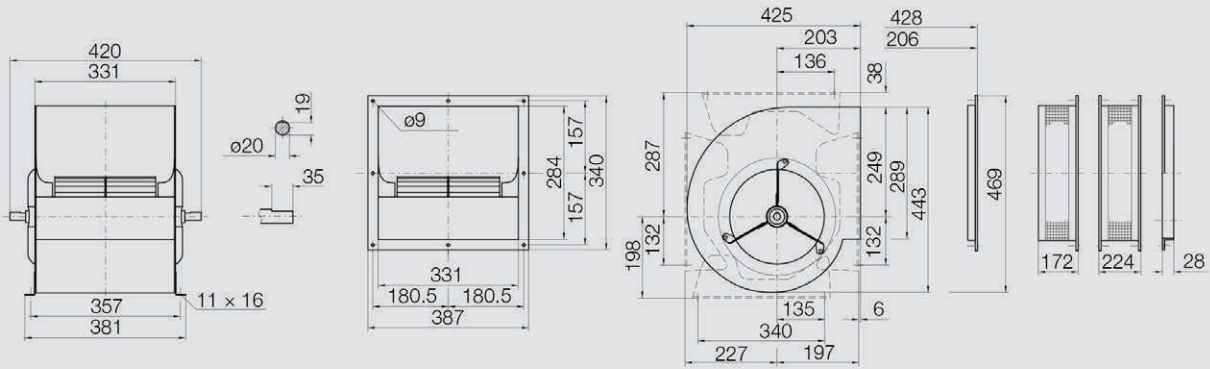
AT S-9/9 7.9 kg



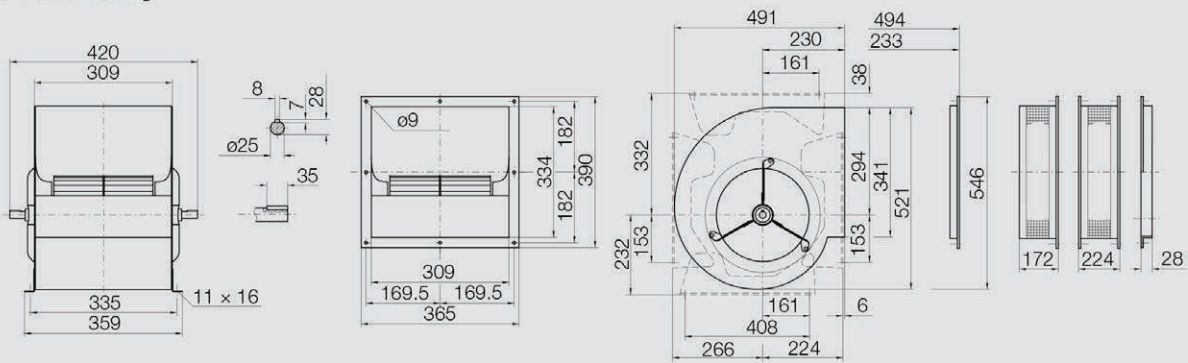
AT S-10/8 8.3 kg



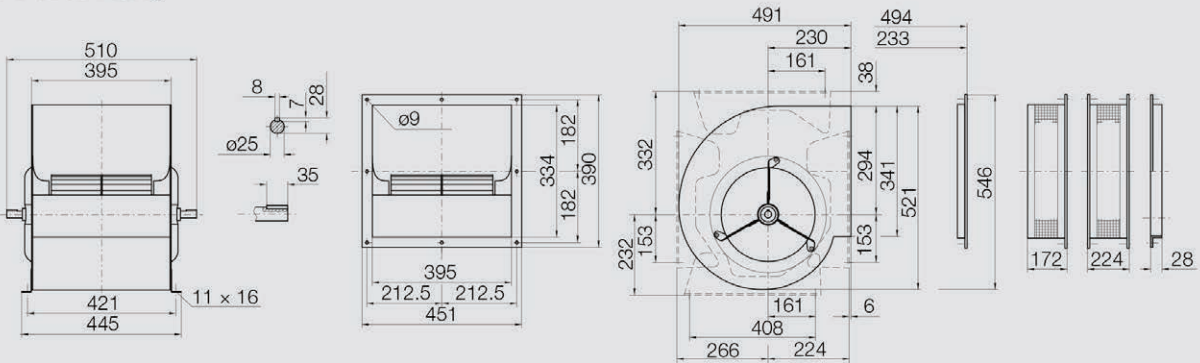
AT S-10/10 9.3 kg



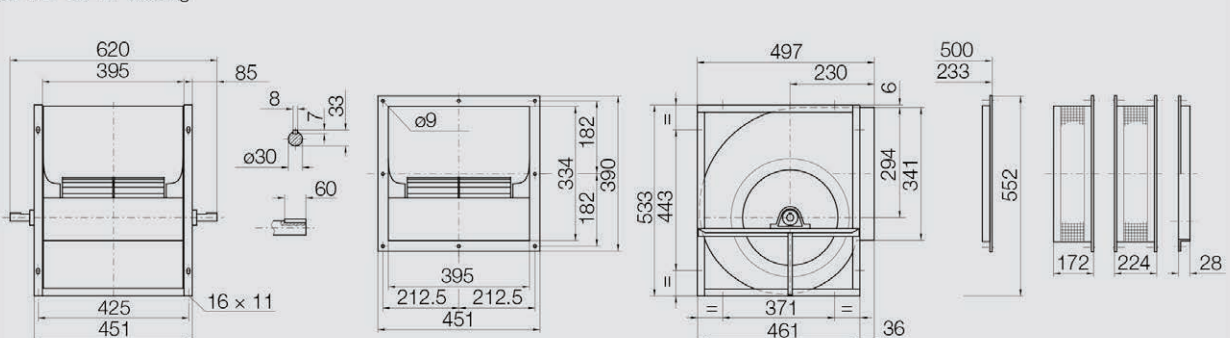
AT S-12/9 12.7 kg



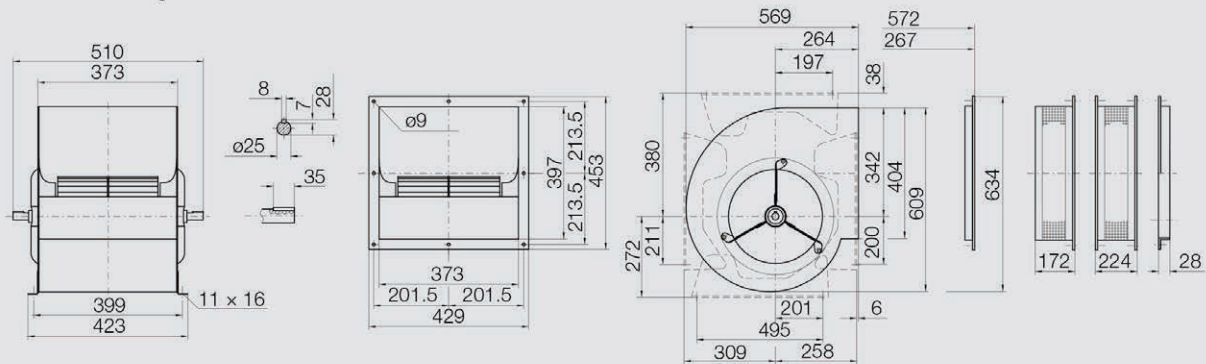
AT S-12/12 15.2 kg



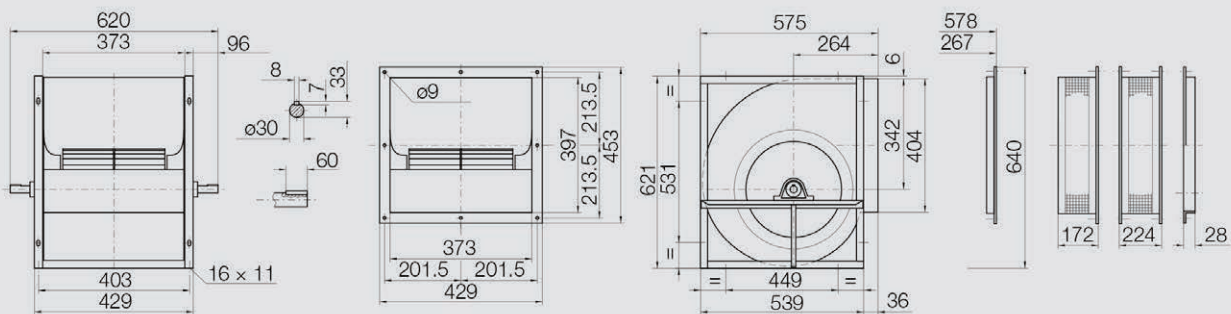
AT AR-12/12 18.4 kg



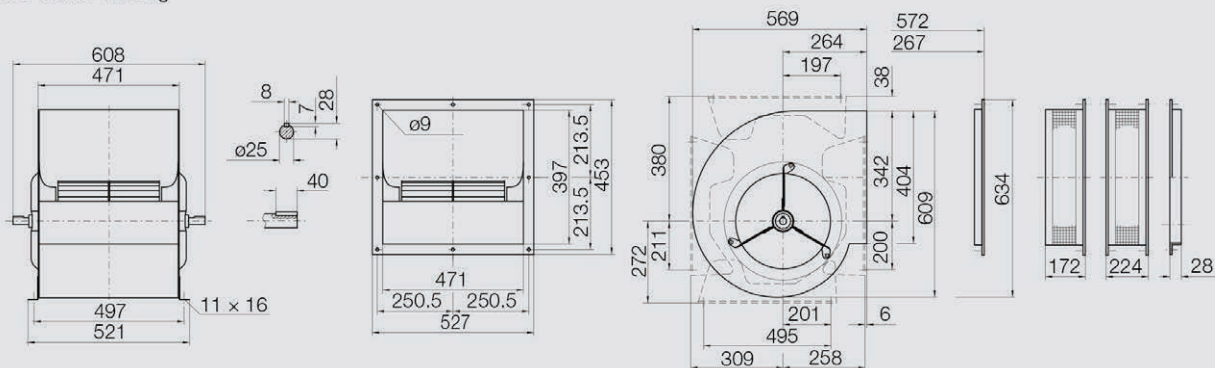
AT S-15/11 17.7 kg



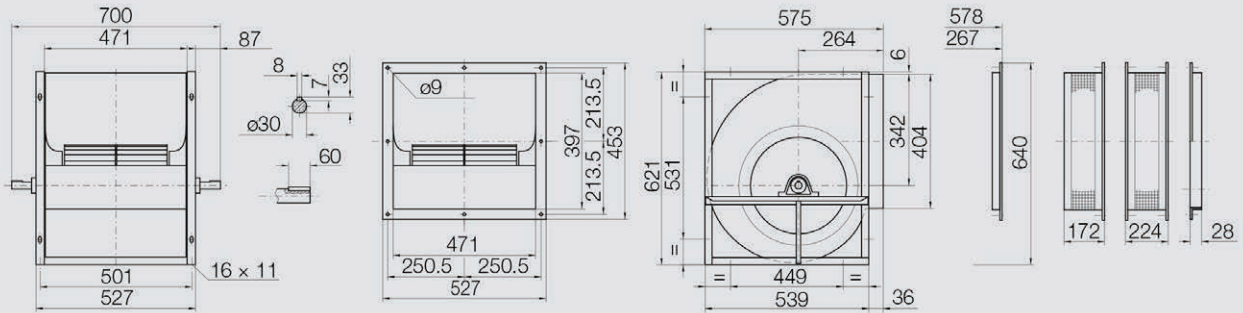
AT AR-15/11 20.9 kg



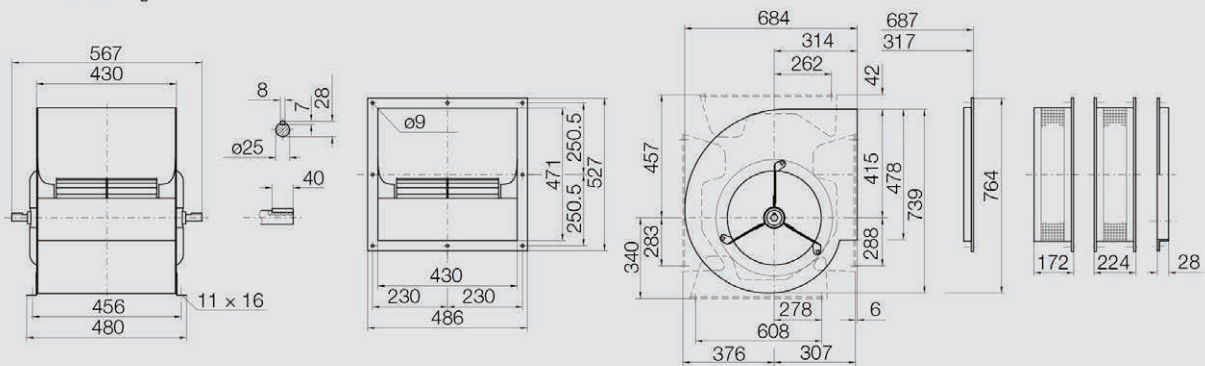
AT S-15/15 20.6 kg



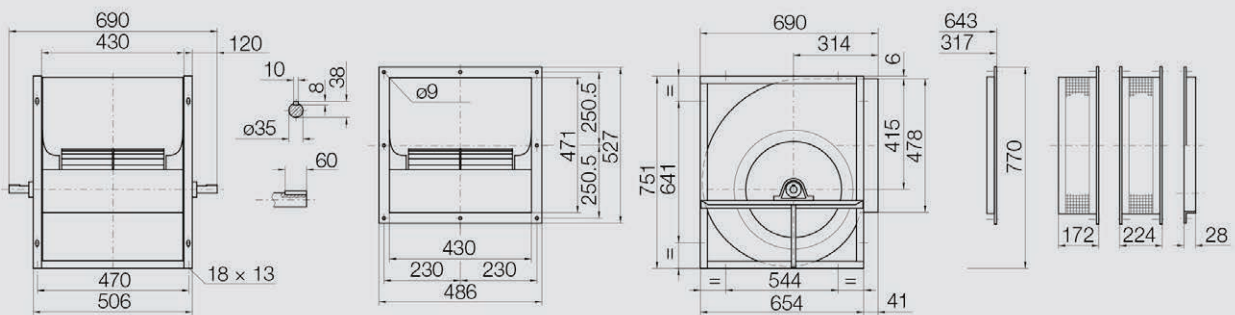
AT AR-15/15 24.5 kg



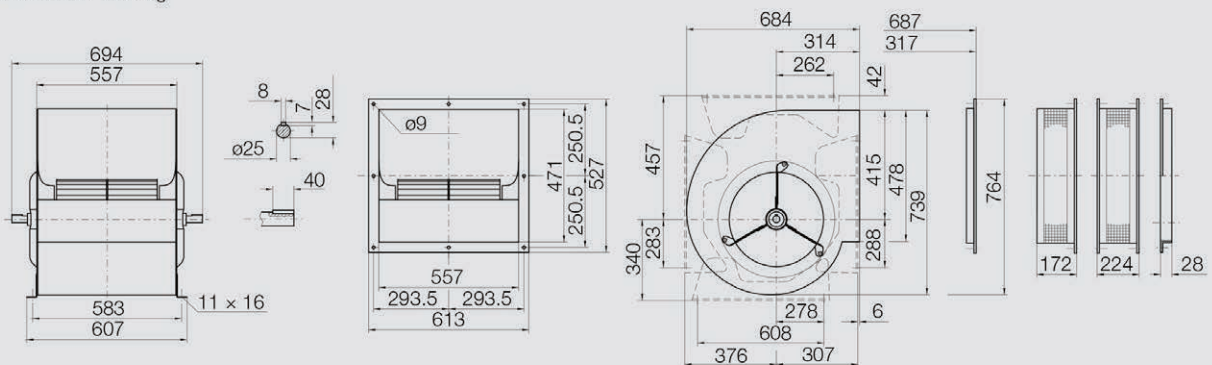
AT S-18/13 27 kg



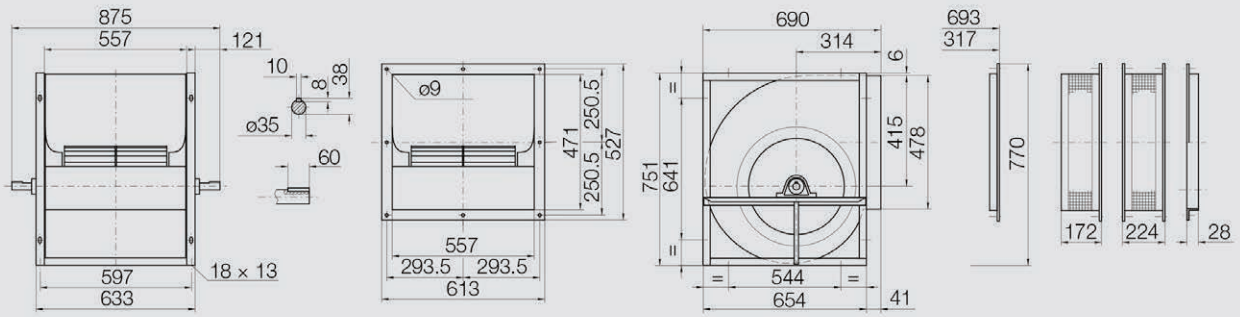
AT AR-18/13 33 kg



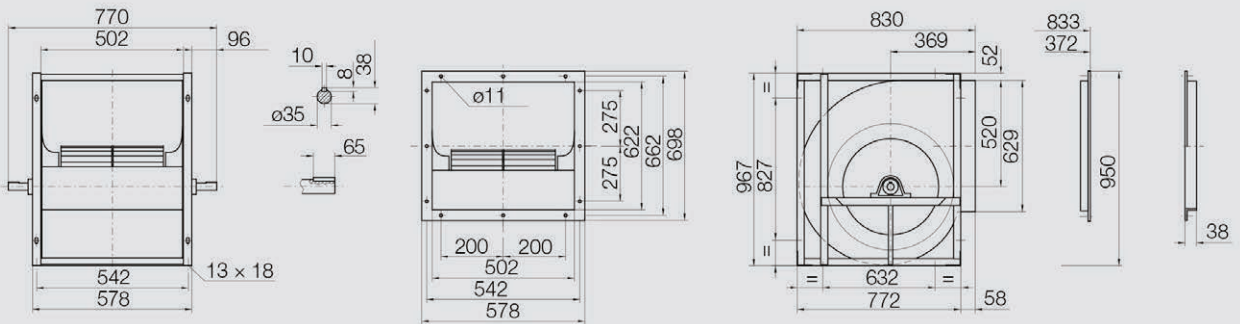
AT S-18/18 32.5 kg



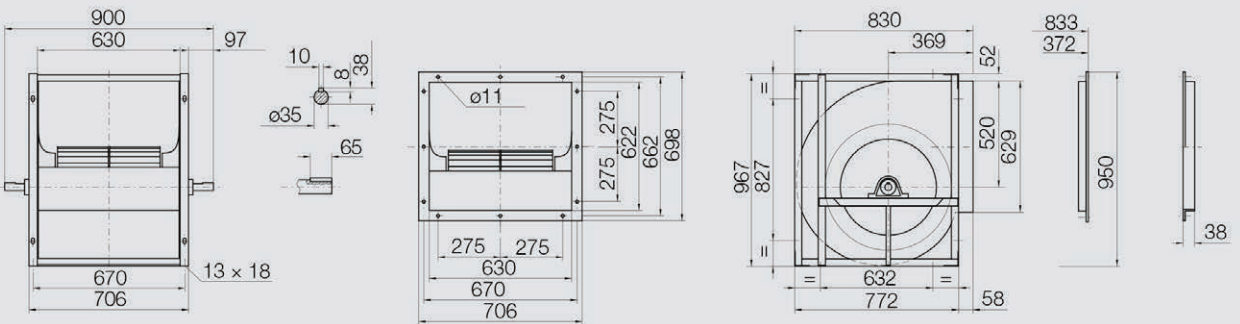
AT AR-18/18 38.2 kg



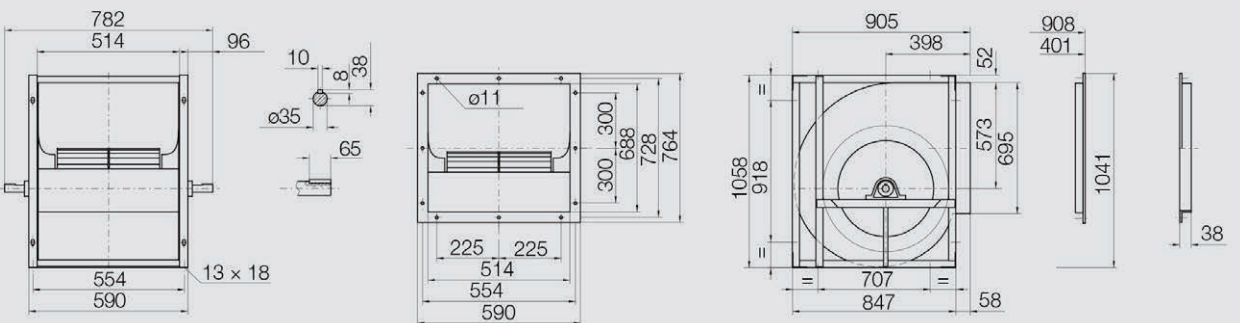
AT TIC-20/15 71 kg



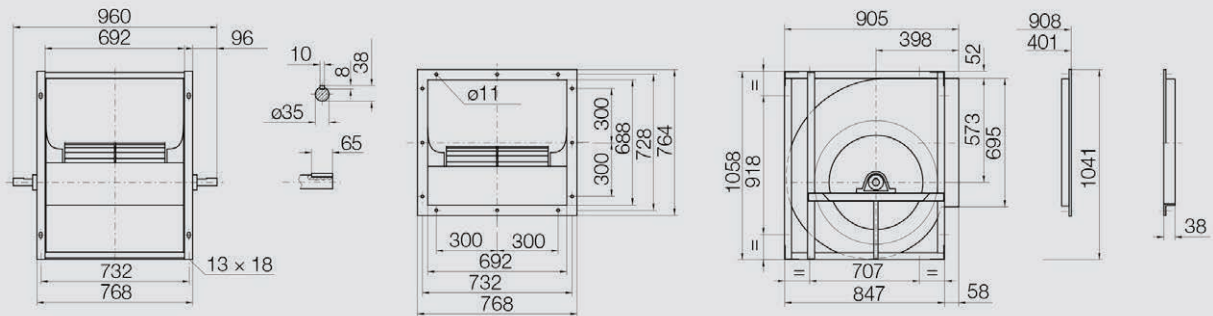
AT TIC-20/20 78 kg



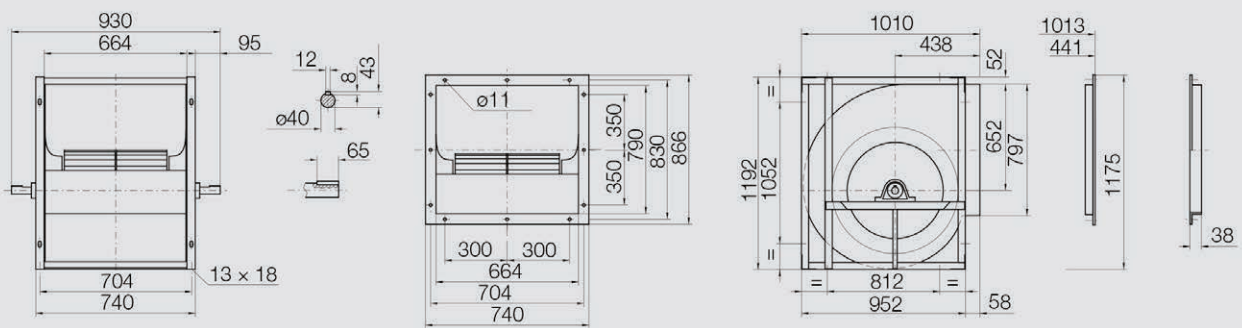
AT TIC-22/15 73 kg



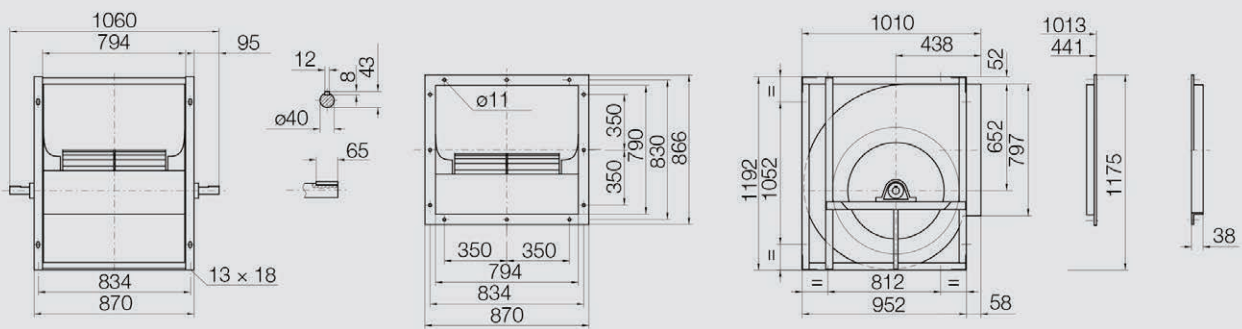
AT TIC-22/22 82.5 kg



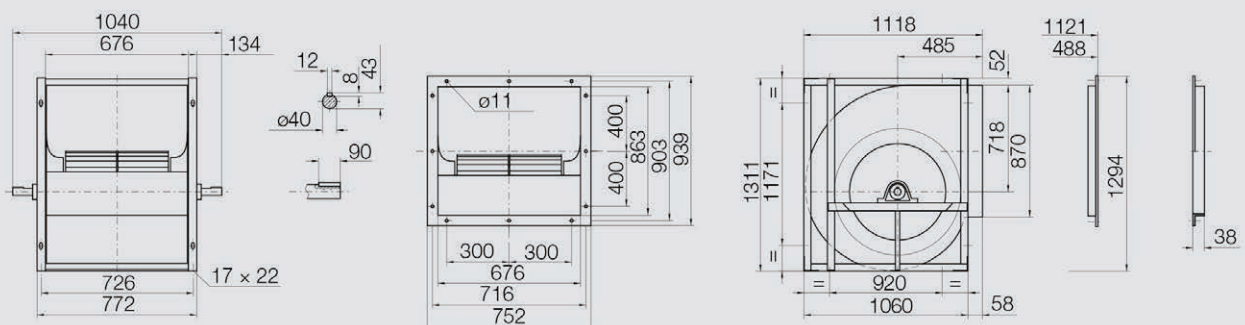
AT TIC-25/20 93 kg



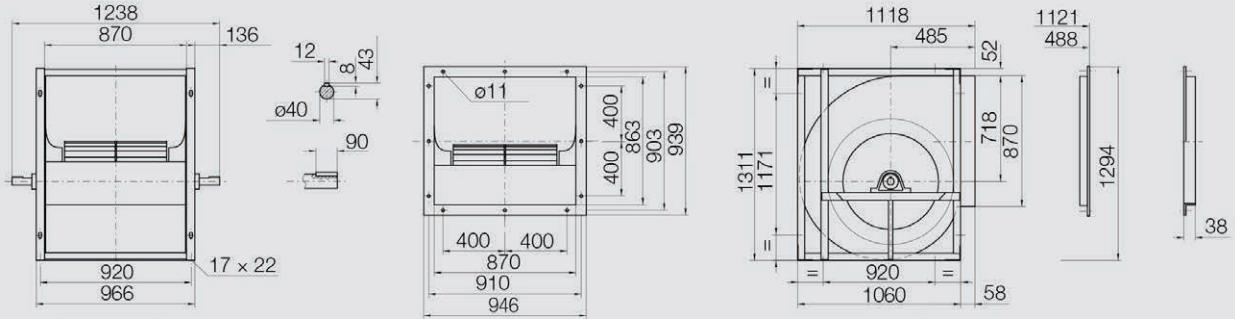
AT TIC-25/25 105 kg



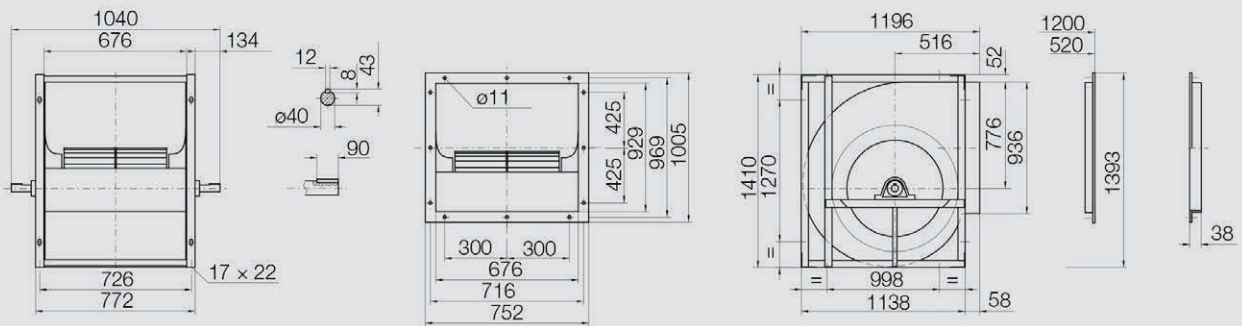
AT TIC-28/20 120 kg



AT TIC-28/28 127 kg



AT TIC-30/20 131 kg



AT TIC-30/28 138 kg

