

## Double Inlet Centrifugal Fans With Forward Curved Blades (Sirocco Type) with External Rotor motor EF Series



- Ideal to recirculate the air on energy fireplaces.
- Customizable in every energy fireplace.
- Double Inlet Centrifugal Fans With Forward Curved Blades (Sirocco Type).
- High standard quality, advanced technology.
- Speed Controllable.
- Silent Operation.
- **External Rotor** motor excellent quality from the German Factory **ebm-papst**.

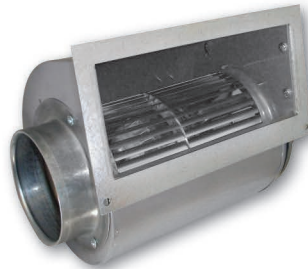
### EF-B (basic model)



- Air flow **970 m<sup>3</sup>/h**.

**Price: € 152,00**

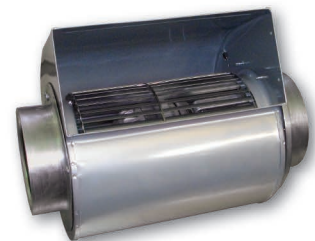
### EF- F1-L (100 – 120 – 140)



- Inlet: 2 connection necks, Outlet: flange.
- Air flow **970 m<sup>3</sup>/h**.

**Price: € 168,00**

### EF-L (100 – 120 – 140)



- Inlet: 2×Ø 100mm.
- Air flow **970 m<sup>3</sup>/h**.

**Price: € 164,00**

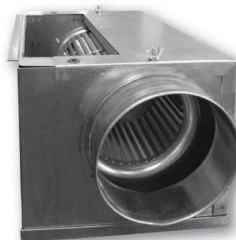
### EF- U - G



- Positioned inside a Fan Section with mounting feet.
- Inlet: 2 grilles.
- Air flow **970 m<sup>3</sup>/h**.

**Price: € 256,00**

### EF- U - L (100 – 120 – 140)



- Positioned inside a Fan Section.
- Inlet: 2 connection necks.
- Outlet: flange.
- Air flow **970 m<sup>3</sup>/h**.

**Price: € 256,00**

### EF-S



- Air flow **495 m<sup>3</sup>/h**.

**Price: € 120,00**

# Double Inlet Centrifugal Fans



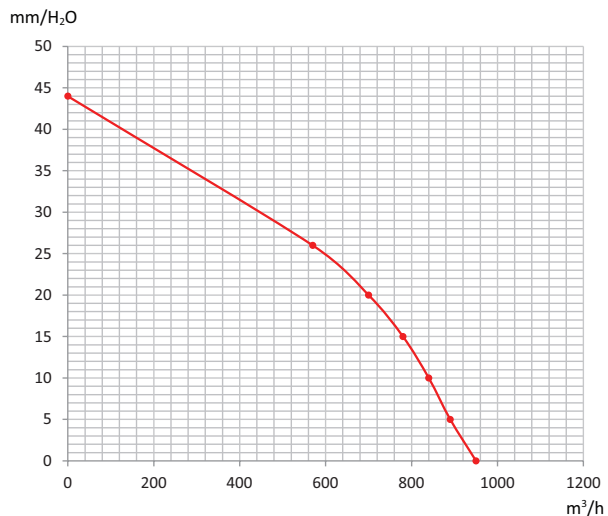
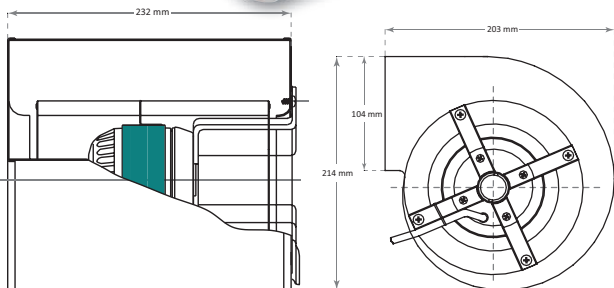
## Double Inlet Centrifugal Fan EF & EF-S inside a fan section (F/S)



Type	Fan Section (F/S) Dimensions (cm)	Price
EF	41,5 X 31,5 X 31,5	€ 262,00
EF-S	30 X 30 X 30	€ 208,00

## Dimensions & Performance Curves

**EF 970 m<sup>3</sup>/h**  
230V/50Hz - 150W



**EF - S**  
230V/50Hz - 87W



### EFS Dimensions (mm)

A	B	C	D	E	H	I	K	L	M	N	O	P
180	168	100	88	67	79,5	146	162	86	165	68	114	62,5

