



Centrifugal High Pressure Belt Driven Fans AATVA Series

- Fan made of Fe360 sheet. The fan paint finish is based on a Qualicoat polyester powder coating stoved at 200°C, with an average film thickness of 70 microns. Average heat resistance of coating is 180°C with peaks of 200°C.
- Fully welded housing.
- High efficiency simple inlet backward impeller with self-cleaning system made of Fe360 sheet statically and dynamically balanced.
- Impellers are painted with polyester primer that resists temperatures up to 300°C.
- Motorized fan with basement (sist 12). Full equipped fans including: motor, pulleys, belts, belts guard and shaft guard. Fitted over a base plate.
- Standard orientation LG270.
- It allows adjusting the orientation locally from models 250 to 630. Models sizes from 710 to 1000 size the orientation is fixed.

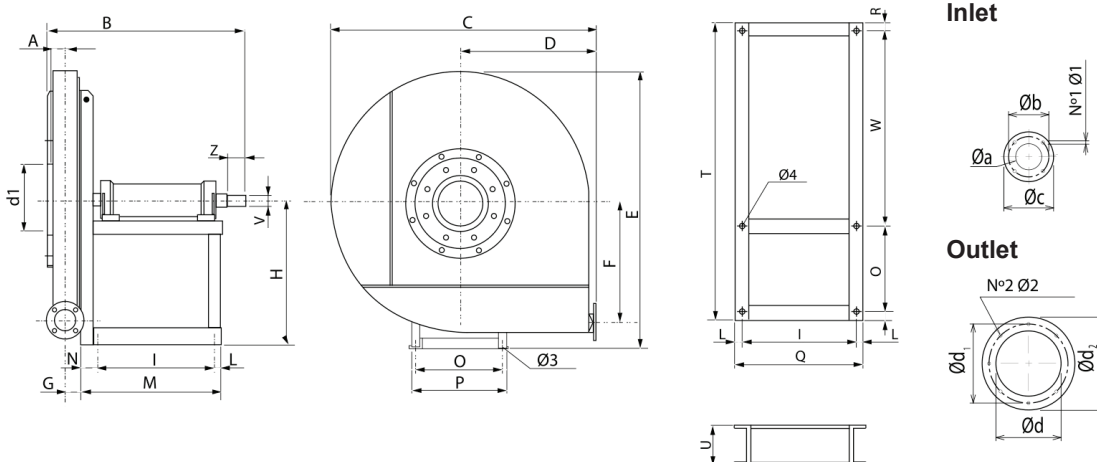
Under request:

- 60Hz fans and special voltages.
- 2 speed motors.
- Spark-proof fans with Atex certified motor.
- Fans for air working temperatures up to 250°C.

Designed for inline installation, they are suitable for
 Transport of solid material and textile fibers.
 Maximum working temperature: carried air 130°C, environment: 60°C.

Technical Characteristics AATVA Series						
Type	Power (kW) max.	RPM max.	Air Flow (m³/h) max.	Sound db (A) (sist.1)	Weight (Kg) (sist.1)	Price* (sist.1)
AATVA 350/P (sist.1)	1,10	2.000 – 3.500	230	54	28,0	€ 2.436,00
AATVA 400/P (sist.1)	1,50	2.000 – 3.500	350	57	35,0	€ 2.680,00
AATVA 450/P (sist.1)	3,00	2.000 – 3.500	360	59	38,0	€ 2.914,00
AATVA 500/P (sist.1)	3,00	1.800 – 3.500	350	60	42,0	€ 3.004,00
AATVA 560/P (sist.1)	3,00	1.800 – 3.500	370	64	65,0	€ 4.055,00
AATVA 630/P (sist.1)	5,50	1.600 – 3.500	520	67	70,0	€ 4.484,00
AATVA 710/P (sist.1)	7,50	1.400 – 3.500	750	69	100,0	€ 5.372,00
AATVA 800/P (sist.1)	11,00	1.450 – 3.500	1.030	73	125,0	€ 6.396,00
AATVA 900/P (sist.1)	18,50	1.250 – 3.200	1.410	74	220,0	€ 8.299,00
AATVA 1000/P (sist.1)	22,00	1.250 – 2.950	1.770	75	330,0	€ 11.701,00

*The fan is supplied with free axle (sist.1), that is: without motor, pulleys or belts or with motor and transmission set (sist.9 and 12).



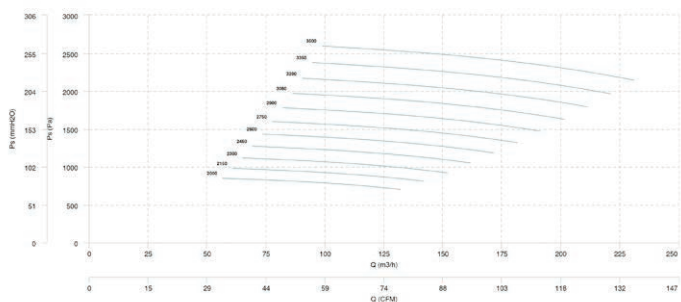
Dimensions AATVA (mm)

Type	A	B	C	D	E	F	G	H	I	L	M	N	N1x01	N2x02	O	P
AATVA 350/P	34	400	515	270	520	220	30	280	210	17	282	55	4x8,5	8x8	228	255
AATVA 400/P	34	405	675	350	673	300	31	355	210	17	282	55	4x8,5	8x8	228	255
AATVA 450/P	34	405	675	350	673	300	31	355	210	17	282	55	4x8,5	8x8	228	255
AATVA 500/P	34	405	675	350	673	300	31	355	210	17	282	55	4x8,5	8x8	228	255
AATVA 560/P	34	485	780	405	800	355	32	425	284	23	347	40	4x8,5	8x8	288	324
AATVA 630/P	34	485	780	405	800	355	32	425	284	23	347	40	4x8,5	8x8	288	324
AATVA 710/P	40	650	880	455	900	400	38	475	407	28	485	50	4x8,5	8x8	355	400
AATVA 800/P	40	650	980	505	1010	450	38	530	407	28	485	50	4x8,5	8x8	355	400
AATVA 900/P	49	695	1120	570	1140	500	48	600	407	28	485	50	4x8,5	8x8	355	400
AATVA 1000/P	49	850	1248	635	1305	560	50	670	477	22,5	544,5	45	4x8,5	8x8	485	530

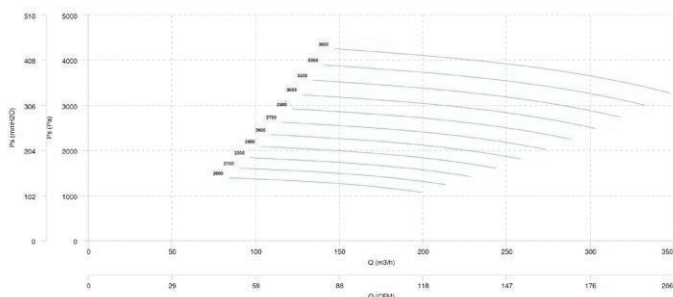
Dimensions AATVA (mm)

Type	Q	R	S	T	U	V	Z	a	b	c	d	d1	d2	Ø3	Ø4
AATVA 350/P	244	13,5	445	700	80	19	40	54	84	104	145	182	215	10	12
AATVA 400/P	244	13,5	445	700	80	19	40	54	84	104	145	182	215	12	12
AATVA 450/P	244	13,5	445	700	80	19	40	54	84	104	145	182	215	12	12
AATVA 500/P	244	13,5	445	700	80	19	40	54	84	104	145	182	215	14	12
AATVA 560/P	330	18	576	900	100	24	50	54	84	104	145	182	215	14	15
AATVA 630/P	303	18	576	900	100	24	50	54	84	104	145	182	215	14	15
AATVA 710/P	463	22,5	660	1060	120	28	60	66	102	126	165	200	235	14	15
AATVA 800/P	463	22,5	660	1060	120	28	60	66	102	126	165	200	235	14	15
AATVA 900/P	463	22,5	780	1180	120	38	80	83	118	143	185	219	250	14	15
AATVA 1000/P	543	22,5	780	1310	120	42	110	83	118	143	185	219	250	14	15

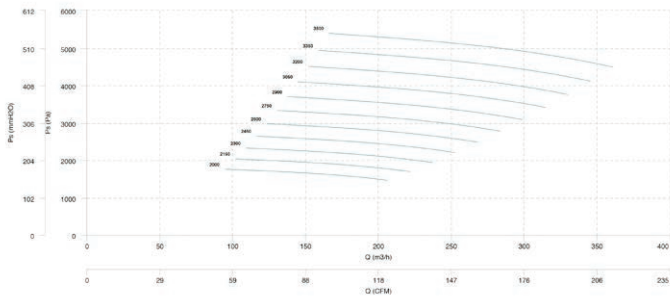
AATVA 350/P



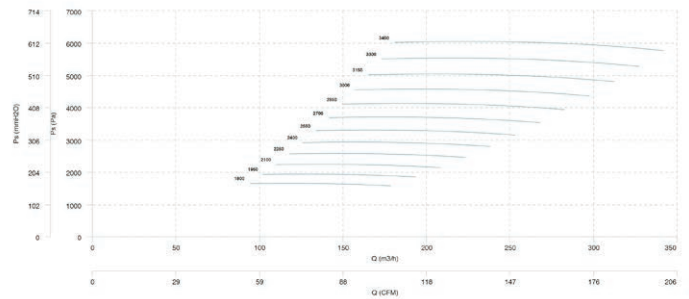
AATVA 400/P



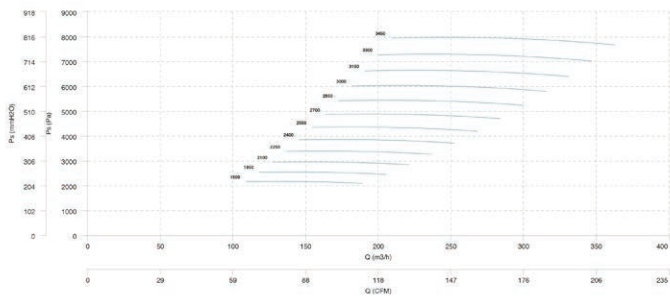
AATVA 450/P



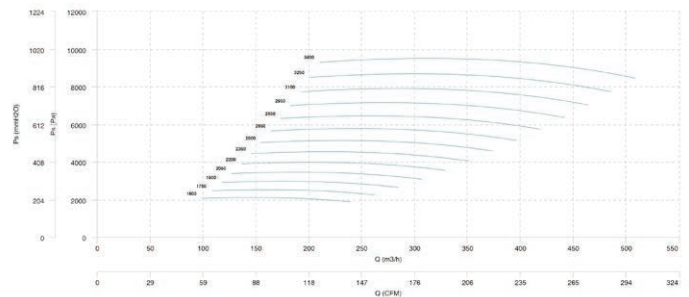
AATVA 500/P



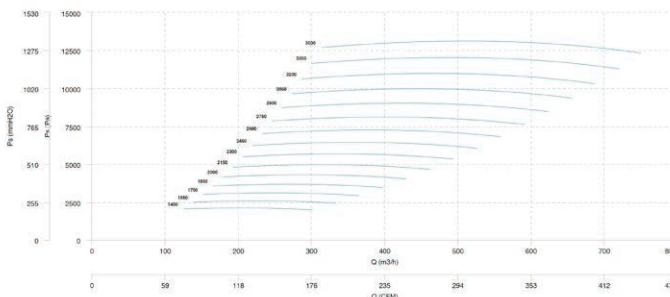
AATVA 560/P



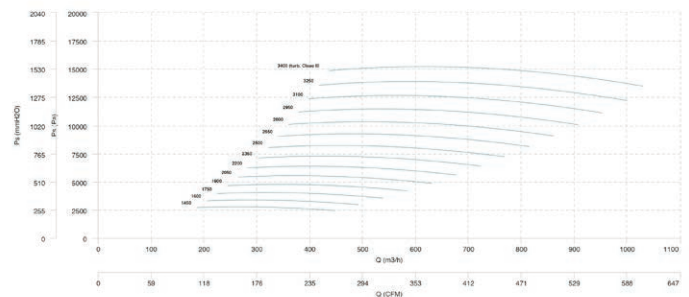
AATVA 630/P



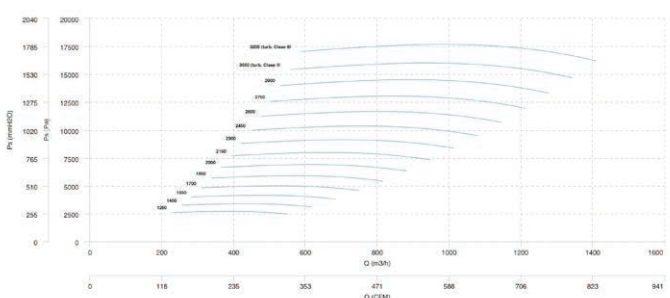
AATVA 710/P



AATVA 800/P



AATVA 900/P



AATVA 1000/P

