

Corrosion Proof Single Inlet Plastic Fans Low Pressure

- Completely made of Polypropylene.
- Polypropylene centrifugal impeller with forward curved blades.

- The material and design make the fan corrosion and spark proof.
- For speed controllers see pages 320-322.
- **Performance curves for all fans** on pages 46-47.

Application: They are suitable for oxidant gas suction, installation in corrosive environments such as chemical industries, laboratories, biological wastewater treatment, underground and outdoors etc.



950 RPM

Type	Power HP	Inlet Flange \varnothing mm	Air flow m ³ /h	Noise Level dB (A)	Price
PLAST - 25/6 - LP	0,50	250	1.500	59	€ 904,00
PLAST - 30/6 - LP	1,00	315	2.500	60	€ 1.271,00
PLAST - 35/6 - LP	2,00	350	4.000	65	€ 1.774,00
PLAST - 40/6 - LP	4,00	400	7.000	72	€ 2.937,00
PLAST - 50/6 - LP	4,00	500	9.000	59	⌘
PLAST - 60/6 - LP	7,50 - 20,00	600	11.000 - 19.000	61 - 64	⌘
PLAST - 70/6 - LP	15,00 - 40,00	700	16.000 - 32.000	62 - 72	⌘

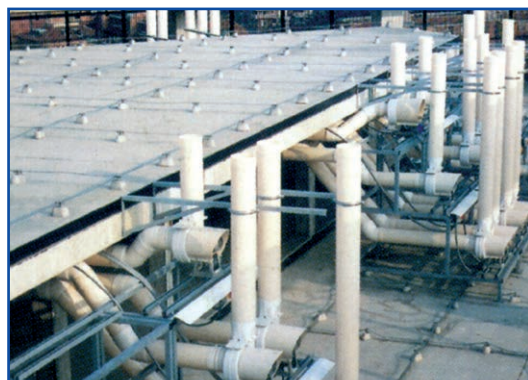
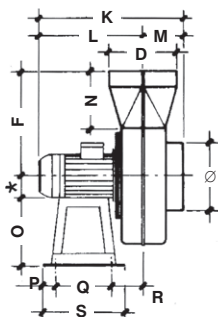
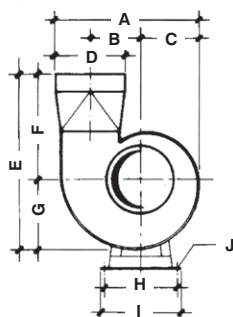
1450 RPM

Type	Power HP	Inlet Flange \varnothing mm	Air flow m ³ /h	Noise Level dB (A)	Price
PLAST - 12/4 - LP	0,25	120	250	56	€ 571,00
PLAST - 16/4 - LP	0,50	160	400	60	€ 747,00
PLAST - 20/4 - LP	0,50	200	1.000	57	€ 769,00
PLAST - 25/4 - LP	1,00	250	2.200	61	€ 877,00
PLAST - 30/4 - LP	1,50	315	4.000	65	€ 1.278,00
PLAST - 35/4 - LP	4,00	355	6.000	70	€ 1.843,00
PLAST - 40/4 - LP	7,50	400	10.000	78	€ 3.005,00
PLAST - 50/4 - LP	15,00	500	13.500	64	⌘

2800 RPM

Type	Power HP	Inlet Flange \varnothing mm	Air flow m ³ /h	Noise Level dB (A)	Price
PLAST - 12/2 - LP	0,25	120	450	67	€ 571,00
PLAST - 16/2 - LP	1,00	160	800	67	€ 747,00
PLAST - 20/2 - LP	1,50	200	1.600	70	€ 761,00
PLAST - 25/2 - LP	3,00	250	2.500	72	€ 932,00

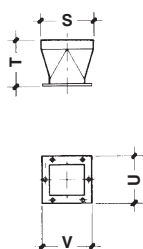
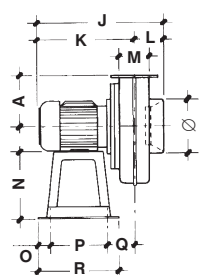
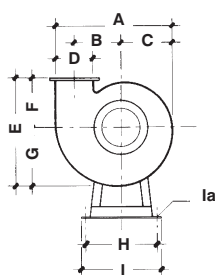
PLAST 125 - 200 - 250



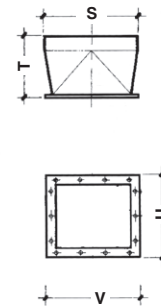
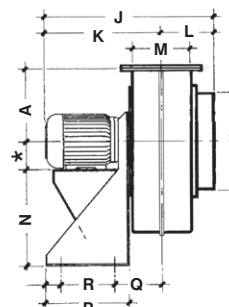
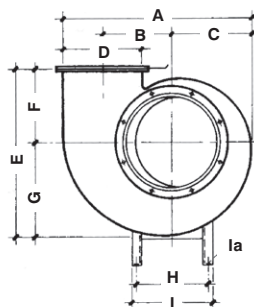
Dimensions

Type	∅	A	B	C	D	E	F	G	H	I	J	K	L	M	N	O	P	Q	R	S
PLAST-12	125	284	103	118	125	324.5	189	135.5	175	200	10	293	221	72	90	130	35	130	80	200
PLAST-20	200	418	148	170	200	501	300	201	215	240	10	420	300	120	160	200	35	170	95	240
PLAST-25	250	520	185	210	250	570	320	250	255	280	10	486.5	357.5	129	150	250	52.5	175	130	280

PLAST 16



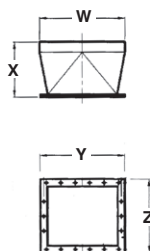
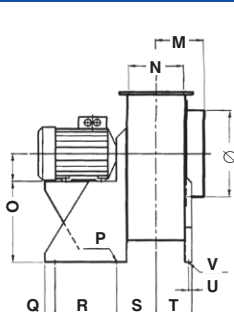
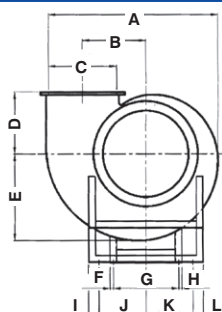
PLAST 315 - 355 - 400



Dimensions

Type	∅	A	B	C	D	E	F	G	H	I	Ia	J	K	L	M	N	O	P	Q	R	S	T	U	V
PLAST - 16	160	349	139.5	157	105	325	148	177	215	240	10	367	282	85	90	200	35	170	80	240	160	120	140	150
PLAST - 30	315	593	222	251	240	515	215	300	234	260	12	565	380	185	195	310	50	175	155	275	315	170	265	306
PLAST - 35	335	696	259	297	280	628	275	353	285	380	12	660	450	210	225	320	50	200	170	300	355	210	305	356
PLAST - 40	400	834.5	310	357	335	724	300	424	315	350	12	810	565	245	270	410	50	250	197	350	400	230	362	421

PLAST 500 - 600 - 700

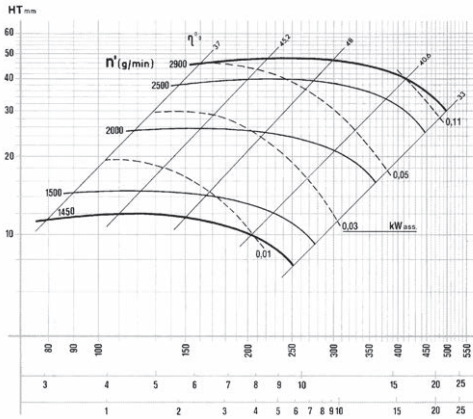


Dimensions

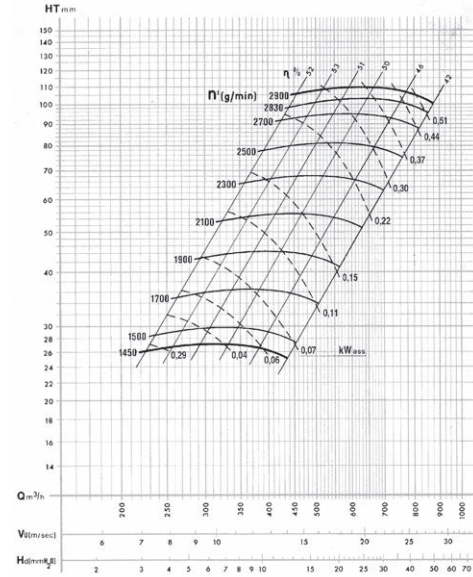
Type	∅	A	B	C	D	E	F	G	H	I	J	K	L	M	N	O	P	Q	R	S	T	U	V	W	X	Y	Z
PLAST - 50	500	993	370	400	358	503	20	380	20	60	275	275	60	280	320	470	14	60	360	231	208	20	14	500	230	496	426
PLAST - 60	600	1191	444	480	426	603	25	450	25	60	335	335	60	325	385	540	14	60	360	270	250	25	14	600	400	586	505
PLAST - 70	700	1387	518	560	492	701	25	520	25	70	385	385	70	365	450	700	14	70	350	310	285	25	14	700	460	666	570

Diagramms Low Pressure - Series performance Curves

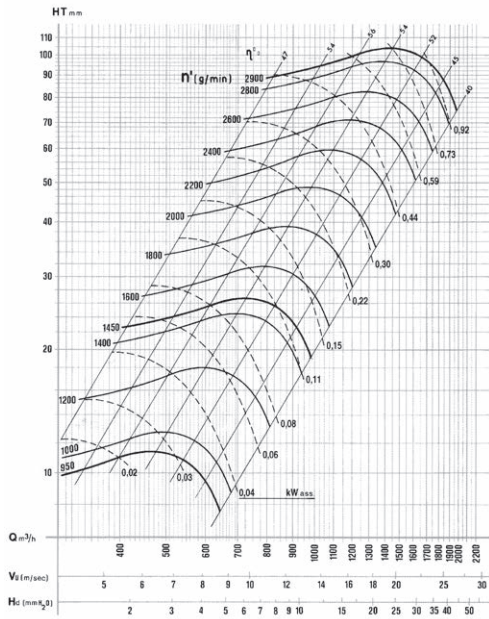
PLAST 12



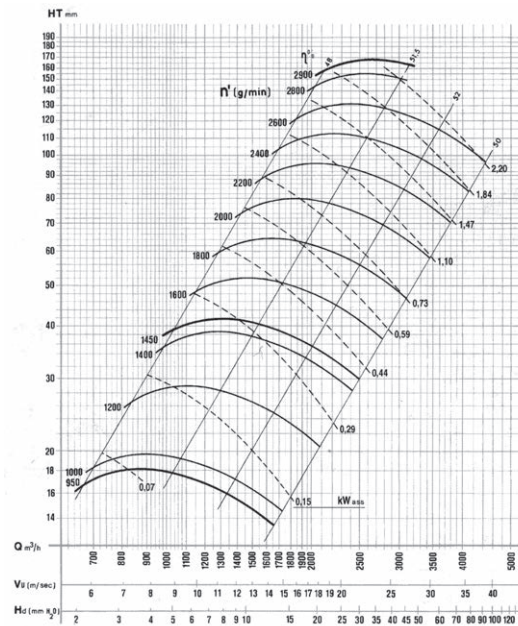
PLAST 16



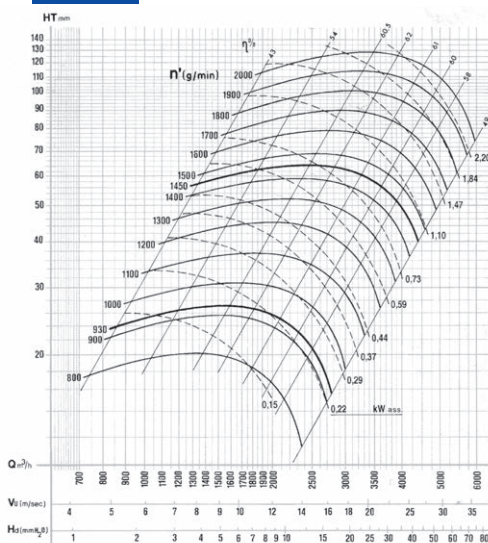
PLAST 20



PLAST 25

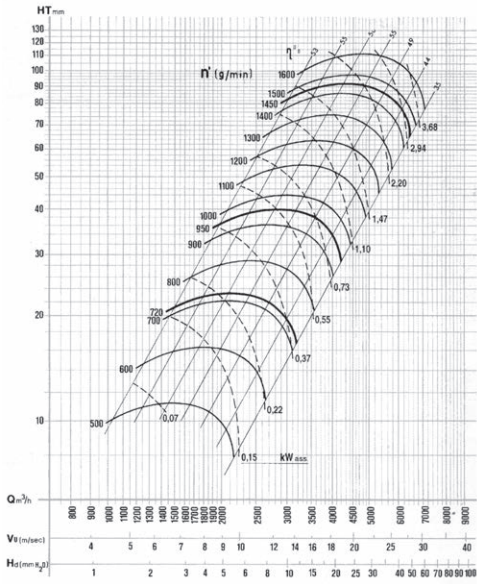


PLAST 30

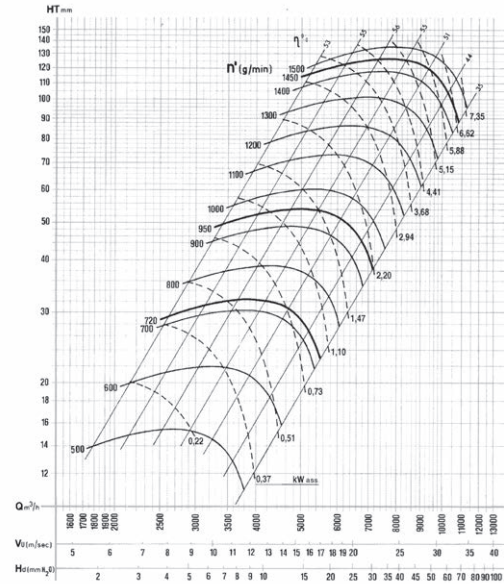


Diagramms Low Pressure - Series performance Curves

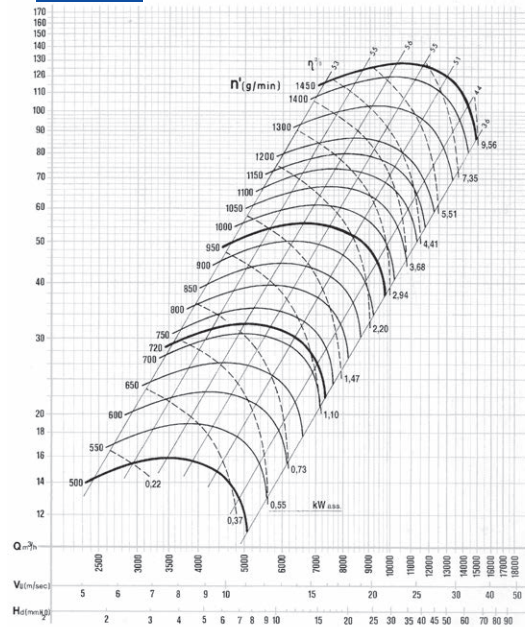
PLAST 35



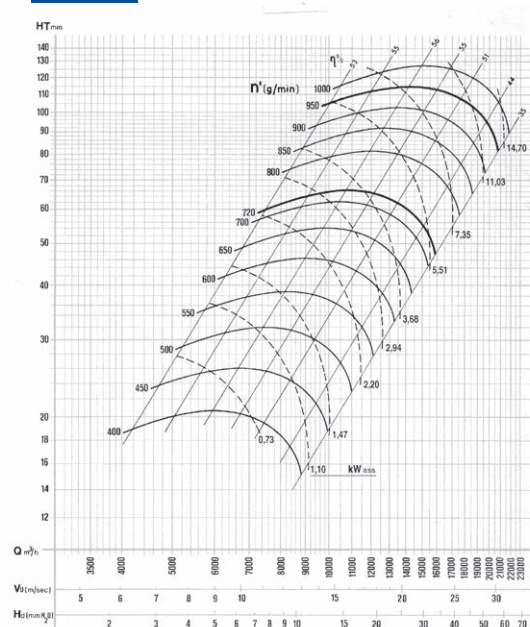
PLAST 40



PLAST 50



PLAST 60



PLAST 70

